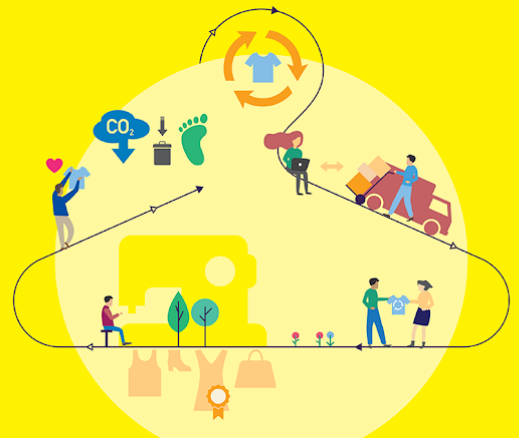




European
Commission

REIMAGINE FASHION

European
Social Innovation
Competition 2020



Frequently Asked Questions

Do you have to be based in the EU to enter?

No - the Competition is open to anyone based in [EU Member States](#) or [Associated Countries to Horizon 2020](#).

Does the idea have to be based in Europe?

Yes - the planned activities of your entry must take place within an eligible country ([EU Member States](#) or [Associated Countries to Horizon 2020](#)).

Is there any age limits for entrants?

Yes - entrants must be 18 years of age or over, at the time of entering the Competition. There is no maximum age limit for entrants.

Can you enter as a team?

Yes - joint applications by a group of individuals are permitted. In this case, the participants must appoint a Lead Participant.

Can you enter as an organisation?

Yes - any legal entity, or group of legal entities can enter, except for public administrations (including local, regional and national governments).

Is there any limit on the number of times you can enter?

No - you can enter the 2020 Competition as many times as you like. If you have entered previous editions of the Competition, you can also enter the 2020 Competition.

Do you have to enter in English?

No - you can enter in any of the 24 [Official EU Languages](#), although please note that the residential training academy for semi-finalists takes place in English.





REIMAGINE FASHION

European
Social Innovation
Competition 2020



Can you enter if you have already entered the idea in other competitions?

Yes - however entrants that have already received an EU or Euratom prize cannot receive a second prize for the same activities.

Can you enter with a pre-existing project?

No - this is an ideas competition. If your project is already operational it is not eligible, although pre-existing organisations can enter with a new project that is separate to their existing work. The Competition aims to support the development of new and early-stage solutions related to the annual theme, and to help them reach the stage of prototyping and implementation.

Are entries assessed solely on their level of innovation?

No - entries are assessed based on their potential degree of innovation, impact, sustainability and scale, as outlined in the [Judging Criteria](#).

Do contestants keep the intellectual property of their idea?

Yes - you retain any and all intellectual property rights of your entry, and any projects that result from it.

Is entry to the Competition confidential?

No - the Commission will publish the names of Semi-Finalists, Finalists and Winners - unless this publication is requested to be waived due to security, safety or commercial concerns.

Are there limits on what you do with the prize money?

No - the Competition does not dictate how the prize money is used.

Is the prize money subject to taxation?

Yes - Winners are responsible for payment of taxes where applicable when receiving and using the prize money.

If your question is not answered within this list, please contact us at info@socialinnovationprize.eu.
An up to date record of all questions asked will be published by the European Commission [here](#).

